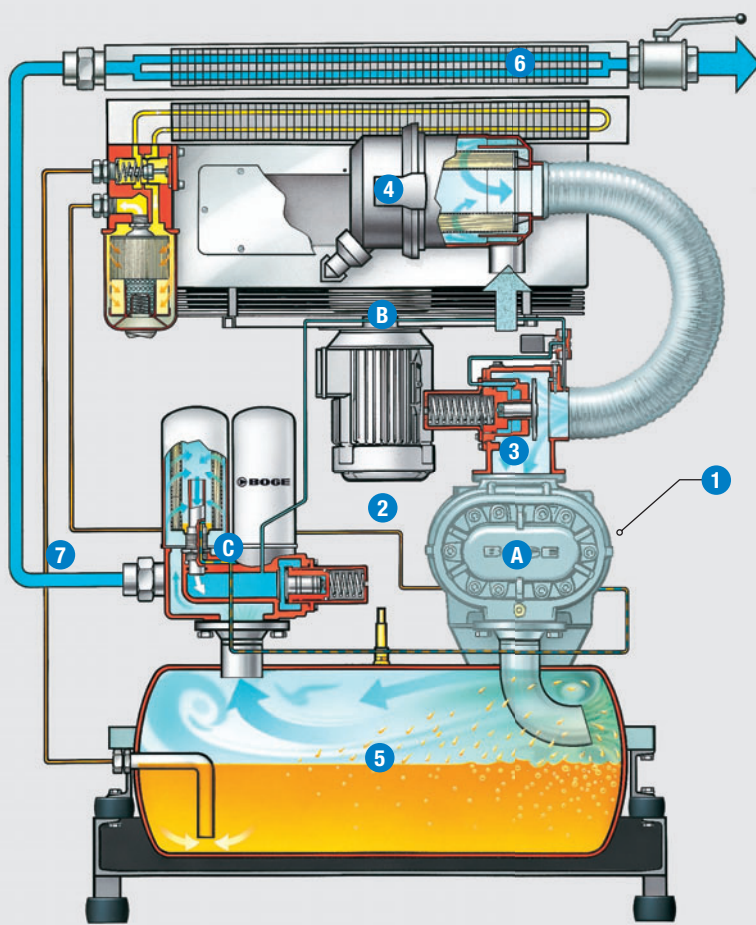




# BOGE S series S-3



# Top quality has surpassed itself again: the new generation BOGE S series.



## Details of new generation:

- **A** New BOGE efficiency air end
- **B** New cooling fan design
- **C** Optimised oil separation
- Factory filled with BOGE SYPREM S (BOGE 3000plus as an option)

## Proven benefits of the BOGE S series:

- **1** Highly efficiency IE3 motor
- **2** Intelligent cooling air circulation
- **3** Valveless oil circuit with multifunction suction regulator
- **4** Suction filter with micro paper element
- **5** Highly effective oil separation system with horizontal receiver
- **6** Self-sufficient cooling system with separate fan
- **7** Internal pipework made from steel tubing
- Integrated switch cabinet
- Maintenance-friendly design

## Intelligent design provides an edge:

The BOGE S series wins you over with its sophisticated design concept, highest quality workmanship and maximum cost-efficiency. Each component is the culmination of decades of expertise by our engineers – giving it an edge is evident in everyday use. From the S 61-3 upwards, there is an option available for generating a cooling air delivery volume to suit customers' needs using a frequency-controlled fan. This significantly boosts the efficiency of the compressor.

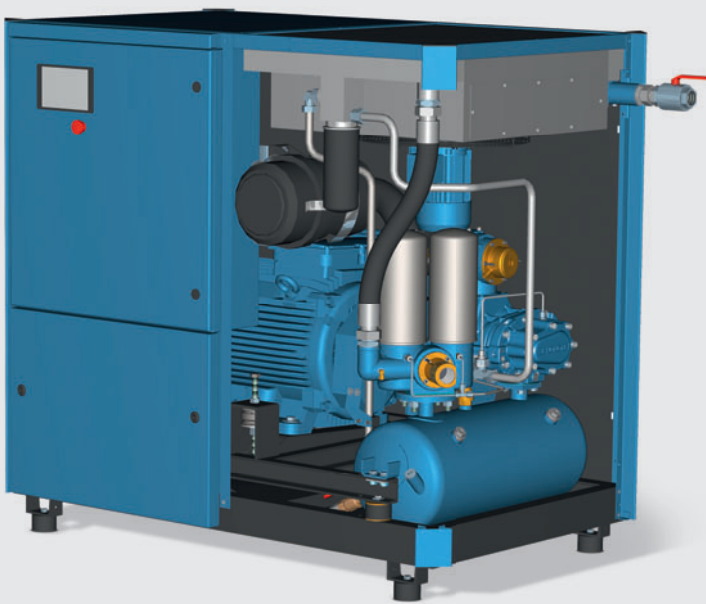
## The ideal lubricant for your BOGE S-3: BOGE SYPREM S.

The advantages:

- Fully synthetic coolant and lubricant
- Reduced vaporisation tendency, therefore lower consumption and less oil carryover into the compressed air system
- Longer service life: changing intervals of up to 9000 operating hours can be achieved
- Viscosity index 55 for optimal temperature characteristics and wide operating temperature range
- Prevents deposits from forming, thus increases service life of compression stage and filtration media

The use of BOGE SYPREM S makes it possible to increase the guarantee period to five years within the framework of the BOGE best<sup>cair</sup> guarantee programme. Further information is available at: [www.boge.com](http://www.boge.com).

**One of the best has been improved upon:** The S series has set standards in efficient and reliable compressed air production. Now, BOGE has made one of the best screw compressor ranges on the market even better. While retaining the proven design philosophy, the efficiency, smooth running properties and the sound pressure levels have been significantly optimised. You can look forward to the best S series of all time!

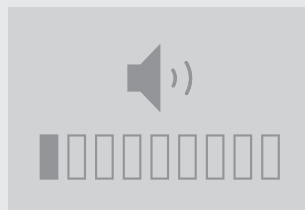


The depicted machine is the super-silenced version



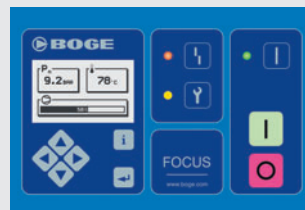
**EVEN MORE EFFICIENT**

The new generation BOGE S series has the most efficient air end ever employed by BOGE – the BOGE effience. Included as standard in every machine in the S-3 series, BOGE's effience enhances the increased air delivery and improved oil separation system to the high level of efficiency achieved by the new compressor generation.



**EVEN QUIETER**

As well as the innovative BOGE effience air end, the new designed fan makes the BOGE's S-3 series quieter than ever. Its speed has been halved resulting in reduced noise levels – while the cooling air has been improved at the same time to provide a consistent cooling performance. The result speaks for itself: the quietest S series of all time!



**PROVEN CONTROL**

The compressor control in the standard version uses a familiar and intuitive FOCUS control which provides numerous monitoring and control features that allows connection to master control system.



**PROVEN DESIGN**

Irrespective of the modification incorporated, the proven design of the S series has still been retained: providing the advantages of the efficient cooling air circulation, the effective optimised oil separation system with a horizontal receiver and the premium quality of one of the most reliable screw compressors on the market.

BOGE Model	Max. pressure		Effective supply rate *		Motor power				Dimensions 1) silenced W x D x H mm	Dimensions 2) super silenced W x D x H mm	Com-pressed air outlet	Weight silenced kg	Weight super silenced kg
					Main drive		Fan motor						
	bar	psig	m <sup>3</sup> /min	cfm	kW	hp	kW	hp					
S 31-3	8	115	3.91	138	22	30	0.75	1.0	1620x960x1450	–	G 1¼	750	–
S 31-3	10	150	3.40	120	22	30	0.75	1.0	1620x960x1450	–	G 1¼	750	–
S 31-3	13	190	2.70	95	22	30	0.75	1.0	1620x960x1450	–	G 1¼	750	–
SLF 30-3	8	115	1.20–3.87	42–137	22	30	0.75	1.0	1830x966x1444	–	G 1¼	775	–
SLF 30-3	10	150	on request	on request	22	30	0.75	1.0	1830x966x1444	–	G 1¼	775	–
SLF 30-3	13	190	on request	on request	22	30	0.75	1.0	1830x966x1444	–	G 1¼	775	–
SLDF 30-3	8	115	1.20–3.87	42–137	22	30	0.75	1.0	1830x966x1664	–	G 1¼	899	–
SLDF 30-3	10	150	on request	on request	22	30	0.75	1.0	1830x966x1664	–	G 1¼	899	–
SLDF 30-3	13	190	on request	on request	22	30	0.75	1.0	1830x966x1664	–	G 1¼	899	–
S 40-3	8	115	5.25	185	30	40	0.75	1.0	1620x960x1450	–	G 1¼	842	–
S 40-3	10	150	4.81	170	30	40	0.75	1.0	1620x960x1450	–	G 1¼	842	–
S 40-3	13	190	3.95	139	30	40	0.75	1.0	1620x960x1450	–	G 1¼	842	–
SD 40-3	8	115	5.25	185	30	40	0.75	1.0	1620x960x1665	–	G 1¼	970	–
SD 40-3	10	150	4.81	170	30	40	0.75	1.0	1620x960x1665	–	G 1¼	970	–
SD 40-3	13	190	3.95	139	30	40	0.75	1.0	1620x960x1665	–	G 1¼	970	–
SLF 40-3	8	115	1.30–5.31	46–187	30	40	0.75	1.0	1830x966x1444	–	G 1¼	845	–
SLF 40-3	10	150	1.30–4.75	46–168	30	40	0.75	1.0	1830x966x1444	–	G 1¼	845	–
SLF 40-3	13	190	1.30–4.01	46–142	30	40	0.75	1.0	1830x966x1444	–	G 1¼	845	–
SLDF 40-3	8	115	1.30–5.31	46–187	30	40	0.75	1.0	1830x966x1664	–	G 1¼	1055	–
SLDF 40-3	10	150	1.30–4.75	46–168	30	40	0.75	1.0	1830x966x1664	–	G 1¼	1055	–
SLDF 40-3	13	190	1.30–4.01	46–142	30	40	0.75	1.0	1830x966x1664	–	G 1¼	1055	–
S 40-3 BLUEKAT	8	115	5.25	185	30	40	0.75	1.0	2270x960x1948	–	G 1¼	1178	–
S 40-3 BLUEKAT	10	150	4.81	170	30	40	0.75	1.0	2270x960x1948	–	G 1¼	1178	–
S 40-3 BLUEKAT	13	190	3.95	139	30	40	0.75	1.0	2270x960x1948	–	G 1¼	1178	–
SLF 40-3 BLUEKAT	8	115	1.30–5.31	46–187	30	40	0.75	1.0	2480x966x1948	–	G 1¼	1157	–
SLF 40-3 BLUEKAT	10	150	1.30–4.75	46–168	30	40	0.75	1.0	2480x966x1948	–	G 1¼	1157	–
SLF 40-3 BLUEKAT	13	190	1.30–4.01	46–142	30	40	0.75	1.0	2480x966x1948	–	G 1¼	1157	–
S 50-3	8	115	6.48	229	37	50	0.75	1.0	1620x960x1450	1620x960x1950	G 1¼	843	873
S 50-3	10	150	5.80	205	37	50	0.75	1.0	1620x960x1450	1620x960x1950	G 1¼	843	873
S 50-3	13	190	4.96	175	37	50	0.75	1.0	1620x960x1450	1620x960x1950	G 1¼	843	873
SD 50-3	8	115	6.48	229	37	50	0.75	1.0	1620x960x1665	1620x960x1950	G 1¼	971	1001
SD 50-3	10	150	5.80	205	37	50	0.75	1.0	1620x960x1665	1620x960x1950	G 1¼	971	1001
SD 50-3	13	190	4.96	175	37	50	0.75	1.0	1620x960x1665	1620x960x1950	G 1¼	971	1001
SLF 51-3	8	115	6.78	239	37	50	1.1	1.5	2040x1090x1450	2040x1090x1950/2060	G 1½	1250	1300
SLF 51-3	10	150	6.10	215	37	50	1.1	1.5	2040x1090x1450	2040x1090x1950/2060	G 1½	1250	1300
SLF 51-3	13	190	5.03	178	37	50	1.1	1.5	2040x1090x1450	2040x1090x1950/2060	G 1½	1250	1300
S 50-3 BLUEKAT	8	115	6.48	229	37	50	0.75	1.0	–	2270x960x1948	G 1¼	–	1358
S 50-3 BLUEKAT	10	150	5.80	205	37	50	0.75	1.0	–	2270x960x1948	G 1¼	–	1358
S 50-3 BLUEKAT	13	190	4.96	175	37	50	0.75	1.0	–	2270x960x1948	G 1¼	–	1358
S 60-3	8	115	7.30	258	45	60	0.75	1.0	1620x960x1450	1620x960x1950	G 1¼	994	1024
S 60-3	10	150	6.53	231	45	60	0.75	1.0	1620x960x1450	1620x960x1950	G 1¼	994	1024
S 60-3	13	190	5.55	196	45	60	0.75	1.0	1620x960x1450	1620x960x1950	G 1¼	994	1024
SD 60-3	8	115	7.30	258	45	60	0.75	1.0	1620x960x1665	1620x960x1950	G 1¼	1122	1152
SD 60-3	10	150	6.53	231	45	60	0.75	1.0	1620x960x1665	1620x960x1950	G 1¼	1122	1152
SD 60-3	13	190	5.55	196	45	60	0.75	1.0	1620x960x1665	1620x960x1950	G 1¼	1122	1152
SF 60-3	8	115	1.58–7.30	56–258	45	60	0.75	1.0	1620x960x1450	1620x960x1950	G 1¼	1057	1087
SF 60-3	10	150	1.44–6.53	51–231	45	60	0.75	1.0	1620x960x1450	1620x960x1950	G 1¼	1057	1087
SF 60-3	13	190	1.19–5.55	42–196	45	60	0.75	1.0	1620x960x1450	1620x960x1950	G 1¼	1057	1087
SDF 60-3	8	115	1.58–7.30	56–258	45	60	0.75	1.0	1620x960x1665	1620x960x1950	G 1¼	1185	1215
SDF 60-3	10	150	1.44–6.53	51–231	45	60	0.75	1.0	1620x960x1665	1620x960x1950	G 1¼	1185	1215
SDF 60-3	13	190	1.19–5.55	42–196	45	60	0.75	1.0	1620x960x1665	1620x960x1950	G 1¼	1185	1215
S 61-3	8	115	7.80	275	45	60	1.5	2.0	2000x1065x1450	2000x1065x1950	G 1½	1180	1230
S 61-3	10	150	7.00	247	45	60	1.5	2.0	2000x1065x1450	2000x1065x1950	G 1½	1180	1230
S 61-3	13	190	5.92	209	45	60	1.5	2.0	2000x1065x1450	2000x1065x1950	G 1½	1180	1230
SD 61-3	8	115	7.80	275	45	60	1.5	2.0	2000x1065x1910	2000x1065x1950	G 1½	1330	1380
SD 61-3	10	150	7.00	247	45	60	1.5	2.0	2000x1065x1910	2000x1065x1950	G 1½	1330	1380
SD 61-3	13	190	5.92	209	45	60	1.5	2.0	2000x1065x1910	2000x1065x1950	G 1½	1330	1380
SLF 61-3	8	115	7.80	275	45	60	1.5	2.0	2040x1090x1450	2040x1090x1950/2060	G 1½	1380	1430
SLF 61-3	10	150	7.00	247	45	60	1.5	2.0	2040x1090x1450	2040x1090x1950/2060	G 1½	1380	1430
SLF 61-3	13	190	5.92	209	45	60	1.5	2.0	2040x1090x1450	2040x1090x1950/2060	G 1½	1380	1430

\* Performance of the overall system in accordance with ISO 1217, Appendix C, at 20 °C ambient temperature and relevant pressure.

Sound pressure emission level in accordance with DIN EN ISO 2151: 2009 from 68 dB(A). <sup>1)</sup>super-silenced on the intake side <sup>2)</sup>super-silenced on the intake and on the exhaust air side

BOGE Model	Max. pressure		Effective supply rate *		Motor power				Dimensions <sup>1)</sup>	Dimensions <sup>2)</sup>	Compressed air outlet	Weight silenced kg	Weight super silenced kg
	bar	psig	m <sup>3</sup> /min	cfm	Main drive		Fan motor		silenced	super silenced			
					W x D x H	W x D x H	mm	mm					
S 75-3	8	115	9.71	343	55	75	2.2	3.0	2000x1065x1450	2000x1065x1950	G 1½	1260	1310
S 75-3	10	150	8.47	299	55	75	2.2	3.0	2000x1065x1450	2000x1065x1950	G 1½	1260	1310
S 75-3	13	190	7.26	256	55	75	2.2	3.0	2000x1065x1450	2000x1065x1950	G 1½	1260	1310
SD 75-3	8	115	9.71	343	55	75	2.2	3.0	2000x1065x1910	2000x1065x1950	G 1½	1430	1480
SD 75-3	10	150	8.47	299	55	75	2.2	3.0	2000x1065x1910	2000x1065x1950	G 1½	1430	1480
SD 75-3	13	190	7.26	256	55	75	2.2	3.0	2000x1065x1910	2000x1065x1950	G 1½	1430	1480
SLF 75-3	8	115	9.71	343	55	75	2.2	3.0	2040x1090x1450	2040x1090x1950/2060	G 1½	1498	1548
SLF 75-3	10	150	8.47	299	55	75	2.2	3.0	2040x1090x1450	2040x1090x1950/2060	G 1½	1498	1548
SLF 75-3	13	190	7.26	256	55	75	2.2	3.0	2040x1090x1450	2040x1090x1950/2060	G 1½	1498	1548
S 90-3	8	115	11.25	397	65	90	2.2	3.0	2000x1065x1450	2000x1065x1950	G 1½	1328	1378
S 90-3	10	150	10.01	353	65	90	2.2	3.0	2000x1065x1450	2000x1065x1950	G 1½	1328	1378
S 90-3	13	190	8.78	310	65	90	2.2	3.0	2000x1065x1450	2000x1065x1950	G 1½	1328	1378
SD 90-3	8	115	11.25	397	65	90	2.2	3.0	2000x1065x1910	2000x1065x1950	G 1½	1498	1548
SD 90-3	10	150	10.01	353	65	90	2.2	3.0	2000x1065x1910	2000x1065x1950	G 1½	1498	1548
SD 90-3	13	190	8.78	310	65	90	2.2	3.0	2000x1065x1910	2000x1065x1950	G 1½	1498	1548
S 100-3	8	115	12.80	452	75	100	2.2	3.0	2000x1065x1450	2000x1065x1950	G 1½	1358	1408
S 100-3	10	150	10.95	387	75	100	2.2	3.0	2000x1065x1450	2000x1065x1950	G 1½	1358	1408
S 100-3	13	190	9.51	336	75	100	2.2	3.0	2000x1065x1450	2000x1065x1950	G 1½	1358	1408
SD 100-3	8	115	12.80	452	75	100	2.2	3.0	2000x1065x1910	2000x1065x1950	G 1½	1528	1578
SD 100-3	10	150	10.95	387	75	100	2.2	3.0	2000x1065x1910	2000x1065x1950	G 1½	1528	1578
SD 100-3	13	190	9.51	336	75	100	2.2	3.0	2000x1065x1910	2000x1065x1950	G 1½	1528	1578
SF 100-3	8	115	12.80	452	75	100	2.2	3.0	2000x1065x1450	2000x1065x1950	G 1½	1388	1438
SF 100-3	10	150	10.95	387	75	100	2.2	3.0	2000x1065x1450	2000x1065x1950	G 1½	1388	1438
SF 100-3	13	190	9.51	336	75	100	2.2	3.0	2000x1065x1450	2000x1065x1950	G 1½	1388	1438
SDF 100-3	8	115	12.80	452	75	100	2.2	3.0	2000x1065x1910	2000x1065x1950	G 1½	1538	1588
SDF 100-3	10	150	10.95	387	75	100	2.2	3.0	2000x1065x1910	2000x1065x1950	G 1½	1538	1588
SDF 100-3	13	190	9.51	336	75	100	2.2	3.0	2000x1065x1910	2000x1065x1950	G 1½	1538	1588
S 101-3	8	115	13.10	463	75	100	2.2	3.0	2365x1335x1750	2365x1335x2250	G 2½	2047	2107
S 101-3	10	150	11.40	403	75	100	2.2	3.0	2365x1335x1750	2365x1335x2250	G 2½	2047	2107
S 101-3	13	190	9.80	346	75	100	2.2	3.0	2365x1335x1750	2365x1335x2250	G 2½	2047	2107
SD 101-3	8	115	13.10	463	75	100	2.2	3.0	2365x1335x2153	2365x1335x2250	G 2½	2213	2273
SD 101-3	10	150	11.40	403	75	100	2.2	3.0	2365x1335x2153	2365x1335x2250	G 2½	2213	2273
SD 101-3	13	190	9.80	346	75	100	2.2	3.0	2365x1335x2153	2365x1335x2250	G 2½	2213	2273
SLF 101-3	8	115	13.64	482	75	100	2.2	3.0	2415x1335x1750	2415x1335x2250	G 2½	2112	2172
SLF 101-3	10	150	12.33	435	75	100	2.2	3.0	2415x1335x1750	2415x1335x2250	G 2½	2112	2172
SLF 101-3	13	190	10.58	374	75	100	2.2	3.0	2415x1335x1750	2415x1335x2250	G 2½	2112	2172
S 125-3	8	115	15.70	554	90	125	4.0	5.5	2365x1335x1750	2365x1335x2250	G 2½	2067	2127
S 125-3	10	150	13.70	484	90	125	4.0	5.5	2365x1335x1750	2365x1335x2250	G 2½	2067	2127
S 125-3	13	190	12.00	424	90	125	4.0	5.5	2365x1335x1750	2365x1335x2250	G 2½	2067	2127
SD 125-3	8	115	15.70	554	90	125	4.0	5.5	2365x1335x2153	2365x1335x2250	G 2½	2233	2293
SD 125-3	10	150	13.70	484	90	125	4.0	5.5	2365x1335x2153	2365x1335x2250	G 2½	2233	2293
SD 125-3	13	190	12.00	424	90	125	4.0	5.5	2365x1335x2153	2365x1335x2250	G 2½	2233	2293
SLF 125-3	8	115	15.70	554	90	125	4.0	5.5	2415x1335x1750	2415x1335x2250	G 2½	2162	2222
SLF 125-3	10	150	14.36	507	90	125	4.0	5.5	2415x1335x1750	2415x1335x2250	G 2½	2162	2222
SLF 125-3	13	190	12.56	443	90	125	4.0	5.5	2415x1335x1750	2415x1335x2250	G 2½	2162	2222
S 150-3	8	115	19.13	675	110	150	4.0	5.5	2365x1335x1750	2365x1335x2250	G 2½	2132	2192
S 150-3	10	150	17.20	607	110	150	4.0	5.5	2365x1335x1750	2365x1335x2250	G 2½	2132	2192
S 150-3	13	190	14.20	501	110	150	4.0	5.5	2365x1335x1750	2365x1335x2250	G 2½	2132	2192
SD 150-3	8	115	19.13	675	110	150	4.0	5.5	2365x1335x2153	2365x1335x2250	G 2½	2298	2358
SD 150-3	10	150	17.20	607	110	150	4.0	5.5	2365x1335x2153	2365x1335x2250	G 2½	2298	2358
SD 150-3	13	190	14.20	501	110	150	4.0	5.5	2365x1335x2153	2365x1335x2250	G 2½	2298	2358
SF 150-3	8	115	19.13	675	110	150	4.0	5.5	2365x1335x1750	2365x1335x2250	G 2½	2200	2260
SF 150-3	10	150	17.20	607	110	150	4.0	5.5	2365x1335x1750	2365x1335x2250	G 2½	2200	2260
SF 150-3	13	190	14.20	501	110	150	4.0	5.5	2365x1335x1750	2365x1335x2250	G 2½	2200	2260
SDF 150-3	8	115	19.13	675	110	150	4.0	5.5	2365x1315x1755	2365x1315x2255	G 2½	2366	2426
SDF 150-3	10	150	17.20	607	110	150	4.0	5.5	2365x1315x1755	2365x1315x2255	G 2½	2366	2426
SDF 150-3	13	190	14.20	501	110	150	4.0	5.5	2365x1315x1755	2365x1315x2255	G 2½	2366	2426

\* Performance of the overall system in accordance with ISO 1217, Appendix C, at 20 °C ambient temperature and relevant pressure.

Sound pressure emission level in accordance with DIN EN ISO 2151: 2009 from 68 dB(A). <sup>1)</sup>super-silenced on the intake side <sup>2)</sup>super-silenced on the intake and on the exhaust air side

**For four generations, customers from mechanical engineering, industry and trade have relied on BOGE know-how when it comes to planning, developing and manufacturing compressed air systems. They are fully aware of the fact that BOGE AIR is more than just ordinary compressed air: utmost safety, outstanding efficiency, excellent quality, maximised flexibility along with dependable service are the ingredients to transform BOGE AIR into air to work with – in Germany, in Europe and in more than 120 countries around the world.**

**Our ranges of services include the following:**

- Energy efficient systems development
- Plant design and engineering
- System control and visualisation
- Oil-free piston and screw compressors
- Oil injected screw compressors  
and oil lubricated piston compressors
- Compressed air treatment
- Compressed air distribution and storage
- Compressed air accessories
- Compressed air service



**BOGE KOMPRESSOREN**

**Otto Boge GmbH & Co. KG**

P.O. Box 10 07 13 · 33507 Bielefeld

Otto-Boge-Straße 1–7 · 33739 Bielefeld

Fon +49 5206 601-0 · Fax +49 5206 601-200

info@boge.com · [www.boge.com](http://www.boge.com)